

# Scheduling and Production Control

*for corrugator and conversion machines*

## Increase Your Plant's Productivity with PC-Topp

- Reduce trim, improve corrugator productivity.
- Reduce work in progress and downtime due to lack of work with Pull Planning.
- React flexibly to production incidents and last minute schedule changes.
- Keep everybody informed on order progress and plant load.
- Connect Planning online to corrugator and conversion machines.
- Tight production control through instant feedback from production.
- Extensive production statistics, detailed production reports available instantly.



### Neugebauer Rhapso GmbH

Passauer Straße 30  
90480 Nürnberg, Germany

Tel. +49 (911) 99 400-0  
Fax +49 (911) 99 400-33

[www.pctopp.com](http://www.pctopp.com)  
[info@pctopp.com](mailto:info@pctopp.com)

[www.rhapso.com](http://www.rhapso.com)  
[info@rhapso.com](mailto:info@rhapso.com)

04/11

*The Experienced Scheduling System*

# System

Corrugator & Conversion Planning  
Production Data Collection  
Production Control  
Live Feedback from Production

# Overview

# System Features

*PC-Topp is a proven software solution for production control and scheduling of corrugator and conversion machines, with links to the plant's commercial data processing system. The software bridges the gap between commercial data processing and production. It fully integrates with any pre-existing IT / enterprise resource planning environment.*

- Corrugator Scheduling
- Conversion Machine Scheduling
- Online Connection to the Corrugator
- Shop Floor Data Collection Terminals in Conversion
- Pallet Labels, Bar Codes
- Extensive Production Statistics
- Order Entry & Cost Calculation

PC-Topp.NET, the current version of our proven scheduling system, is an Intranet application based on Microsoft .NET technology. Thus the software unites all the strengths of our expert solution with the advantages of a web server application.

It is fast, high performing, robust, safe, and flexible: PC-Topp.NET can be used on any PC on the customer's network, in a group's WAN, or even across the Internet. PC-Topp.NET meets all the technical requirements for multi-site planning.

With Microsoft Internet Explorer as PC-Topp.NET's primary user interface, the system offers users from all cultural backgrounds a familiar working environment which makes the software as easy to learn as it is to use in everyday work. And because PC-Topp is based on a proven application framework the system offers the reliable and stable operation that your plant requires.

## Seamless Integration with Customer's ERP

PC-Topp takes orders and other data from the host system, and provides order status information, schedules, and production actuals to the host in real time. Designed for networked PCs running under Windows, PC-Topp is easy to implement in any environment and can interface with any commercial data processing (order entry) system.

## Full Solution for Plants Without an Order Entry System

For plants requiring not only scheduling and production control but also an order entry system, PC-Topp Front Office adds order management and cost estimating to PC-Topp, thereby making our expert system a complete solution. PC-Topp Front Office offers fast and easy order entry, quotation issuing and creating related articles within seconds.

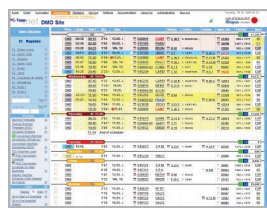
## Corrugator Scheduling



Cost factor based Automatic Optimisation calculates excellent results within seconds, Interactive Planning allows the planner to draw on his experience while doing the number crunching for him.

PC-Topp helps him create schedules with minimum trim, maximum productivity, and best timing for conversion.

## Conversion Machine Scheduling



PC-Topp automatically pre-schedules all new orders for conversion. The planner then creates the actual schedule interactively, within a simple and natural user interface that allows flexible reactions to rush orders or to problems in production. Automatic optimisation makes integrating new orders or schedule revisions easy.

## Tight Integration of Conversion Scheduling and Corrugator Planning

Every schedule change in conversion is instantly reflected in corrugator planning and vice versa. Thus modern Pull Planning becomes a reality – from Shipping through Conversion all the way to the corrugator schedule.

## Two Ways of Planning

While modern Pull Planning offers significant advantages, PC-Topp supports the classical planning approach as well.

*Modern Pull Planning:* Conversion first, the corrugator last – highest precision in scheduling, best control over work in progress.

*Classical planning:* Schedule the corrugator first, then distribute the orders on the conversion machines – the way most people plan by hand.

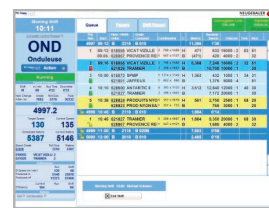
## Pallet Labels

PC-Topp supports creating shipping labels as well as internal labels with fully customizable design, including complex barcodes (SSCC), bitmap logos, and Windows fonts, as well as specific layouts for selected customers, for printout on HP LaserJet compatible printers.

Each pallet label contains the exact quantity on the corresponding pallet, even on an order's last pallet. And the pallet data is stored in the PC-Topp database for further use.

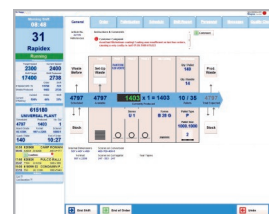
During truck loading simply scan the pallets to get the precise quantity on the truck. And if you do likewise with pallets going into or out of stock you always know the exact total quantity in stock, too.

## Online Link to the Corrugator



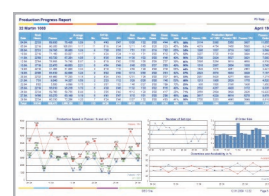
PC-Topp connects to modern corrugators from all major manufacturers. Its Online Link to the Corrugator allows monitoring production progress in real time, transfers schedules including slitter-scoring settings to the corrugator, and updates order progress with corrugator production actuals throughout the system.

## Machine Terminals in Conversion



PC-Topp.NET Machine Terminals show the conversion machine schedules, order details, shift reports, and order documents like CAD drawings right at the machine. They automatically capture produced quantities and all production events like downtimes, set-ups, shift starts and ends for extensive production statistics. They prompt the operators for quality checks, and allow managing palletisation as well as pallet label printing.

## Comprehensive Production Statistics



All production information – from downtimes, order set-up, run and end times to staff work hours and production counts – is recorded and forms the basis of extensive production reports which are available instantly and for any desired period of time.

The wide variety of well-structured, easy to read PC-Topp reports continuously increases; the system also supports reports covering all plants of an enterprise.

Moreover, all PC-Topp data is available in an SQL Server database for the creation of customized reports with any software capable of accessing SQL Server databases (e.g. Crystal reports or Microsoft Excel).